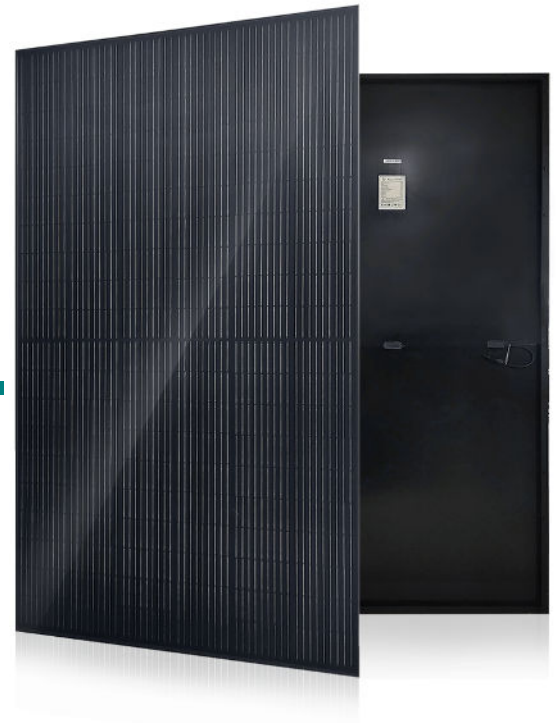


# Maysun Solar

166mm 120Cells

Monocrystalline Full-Black PV Module

## MS(360-380)MB- 60H Series



### 120 LAYOUT

MONOCRYSTALLINE MODULE

### 360- 380W

POWER OUTPUT RANGE

### 20.7%

MAXIMUM EFFICIENCY

### 0~+5W

POSITIVE POWER TOLERANCE

Maysun Solar brand was established in 2008, our marketing center is located in the beautiful Chinese city of Hangzhou. We are a professional solar panels manufacturer and wholesaler. Our business covers the production and manufacture of various types of mono solar panels and poly solar panels. We have two solar plates production bases in China and UAE, with an annual production capacity of 1G watts. Our solar panel products have been exported to more than 80 countries and regions around the world. We have overseas sales offices and warehouses in Germany, Italy, Poland, Hungary, Saudi Arabia, Indonesia, UAE, etc. We have strictly quality management system of solar PV module, we are capable of absorbing and applying advanced technologies and new processes in the photovoltaic module industry in the fastest time, bringing high-performance special solar PV modules to the market, and serve our customers.

**Comprehensive Products and System Certificates**

IEC61215/IEC61730/IEC61701/IEC62716  
ISO 9001: Quality Management System

Management System



PRODUCTS

MS(360-380)MB- 60H

POWER RANGE

360-380W

#### High power



- Up to 380W front power and 20.7% module efficiency with half-cut and MBB (Multi Busbar) technology bringing more BOS savings
- Lower resistance of half-cut and good reflection effect of MBB ensure high power

#### High reliability



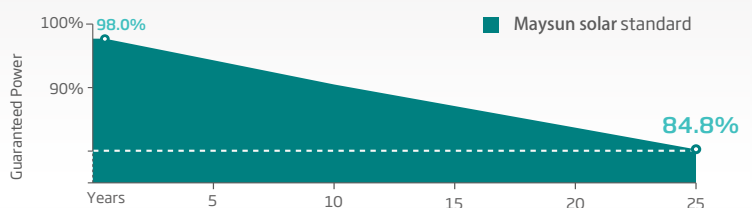
- Ensured PID resistance through cell process and module material control
- Resistant to salt, acid and ammonia
- Mechanical performance: Up to 5400 Pa positive load and 2400 Pa negative load

#### High energy generation

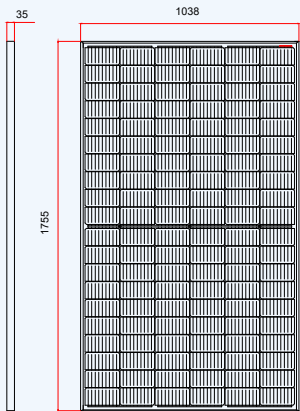


- Excellent IAM and low light performance validated by 3rd party with cell process and module material optimization
- Better anti-shading performance and lower operating temperature

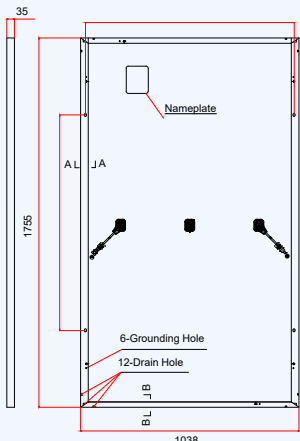
#### PERFORMANCE WARRANTY



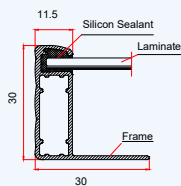
### DIMENSIONS OF PV MODULE(mm)



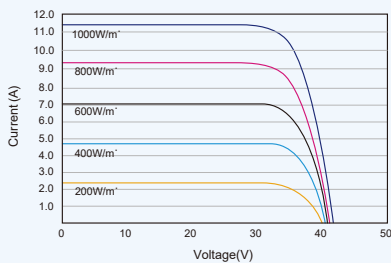
Front View



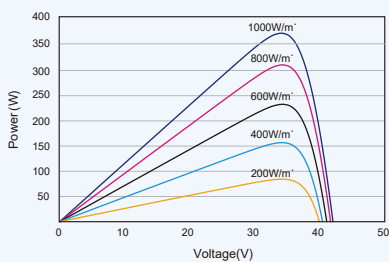
Back View



### I-V CURVES OF PV MODULE(370W)



### P-V CURVES OF PV MODULE(370W)



### ELECTRICAL DATA (STC)

Parameter	360	365	370	375	380
Peak Power Watts-P <sub>MAX</sub> (Wp)*	360	365	370	375	380
Power Tolerance-P <sub>MAX</sub> (W)	0 ~ +5				
Maximum Power Voltage-V <sub>MPP</sub> (V)	33.6	33.9	34.2	34.4	34.7
Maximum Power Current-I <sub>MPP</sub> (A)	10.70	10.76	10.82	10.89	10.96
Open Circuit Voltage-V <sub>OC</sub> (V)	40.7	41.0	41.3	41.6	41.9
Short Circuit Current-I <sub>SC</sub> (A)	11.24	11.30	11.37	11.45	11.52
Module Efficiency η <sub>m</sub> (%)	19.6	19.9	20.2	20.5	20.7

STC: Irradiance 1000W/m<sup>2</sup>, Cell Temperature 25°C, Air Mass AM1.5.  
\*Measuring tolerance: ±3%.

### ELECTRICAL DATA (NOCT)

Parameter	271	275	279	283	287
Maximum Power-P <sub>MAX</sub> (Wp)	271	275	279	283	287
Maximum Power Voltage-V <sub>MPP</sub> (V)	31.5	31.8	32.0	32.2	32.5
Maximum Power Current-I <sub>MPP</sub> (A)	8.60	8.65	8.71	8.77	8.83
Open Circuit Voltage-V <sub>OC</sub> (V)	38.3	38.6	38.9	39.2	39.4
Short Circuit Current-I <sub>SC</sub> (A)	9.06	9.10	9.16	9.23	9.28

NOCT: Irradiance at 800W/m<sup>2</sup>, Ambient Temperature 20°C, Wind Speed 1m/s.

### MECHANICAL DATA

Solar Cells	Monocrystalline
Cell Orientation	120 cells (6× 20)
Module Dimensions	1755× 1038 × 35 mm (69.09× 40.86 × 1.38 inches)
Weight	20.0 kg
Glass	3.2mm (0.13 inches), High Transmission, Tempered Glass
Encapsulant Material	EVA/POE
Backsheet	Black
Frame	35 mm (1.38 inches) Black Anodized Aluminium Alloy
J-Box	IP 68 rated
Cables	Photovoltaic Technology Cable 4.0mm <sup>2</sup> (0.006 inches <sup>2</sup> ), Portrait: N 300mm/P 300mm(11.02/11.02inches)
Connector	MC4

\*Please refer to regional datasheet for specific connector.

### TEMPERATURE RATINGS

NOCT(Nominal Operating Cell Temperature)	43°C (±2°C)
Temperature Coe <sup>o</sup> cient of P <sub>MAX</sub>	- 0.34%/ C
Temperature Coe <sup>o</sup> cient of V <sub>OC</sub>	- 0.25%/ C
Temperature Coe <sup>o</sup> cient of I <sub>SC</sub>	0.04%/ C

(Do not connect Fuse in Combiner Box with two or more strings in parallel connection)

### WARRANTY

- 12 year Product Workmanship Warranty
- 25 year Power Warranty
- 2% first year degradation
- 0.55% Annual Power Attenuation

(Please refer to product warranty for details)

### MAXIMUM RATINGS

Operational Temperature	-40~+85 C
Maximum System Voltage	1500V DC (IEC)
Max Series Fuse Rating	20A

### PACKAGING CONFIGURATION

- Modules per box: 31 pieces
- Modules per 40' container: 871 pieces



CAUTION: READ SAFETY AND INSTALLATION INSTRUCTIONS BEFORE USING THE PRODUCT.

© 2021 Maysun Solar FZCO. All rights reserved. Specifications included in this datasheet are subject to change without notice. Version number: MS20210720

Website: www.maysunsolar.com